



Specification Sheet

Sizes	Metric	Imperial
-	-	-
-	-	-
Size 2	1.7 x 2.4 m	5'7" x 7'10"
Size 3	2 x 3 m	6'7" x 9'10"
Size 3.5	2.5 x 3.5 m	8'2" x 11'6"
-	-	-
-	-	-

Weave/Pile Height	Composition
1 cm (3/8")	100% Recycled PET

End Finish	Use Purpose
Turnover	Indoor, Outdoor

Construction

Hand woven flat weave. Handmade in India under Fair Trade standards.

Notes

Custom size available. Max. size 4 x 10 m (13'2" x 32'10")

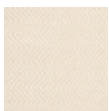
Suitability

- Residential
- Light commercial project
- Hall runners
- Direct sunlight
- Outdoors

Colours & Codes



QUI-BT/FG
Basalt & Fog



QUI-BL/OA
Barley & Oatmeal

Areas of Use



Care Instructions

Vacuum your rug regularly as shedding of loose fibres will occur with a new rug (do not use a rotating or brush head on the vacuum cleaner). Promptly clean spills by blotting with a clean, undyed cloth. Do not dry clean or use harsh chemicals that could damage or fade your rug. Never fold your rug for storage or keep in an airtight bag. If rug remains in an uncovered area outdoors and is subject to rain or heavy dew, it should be allowed to dry front and back, as dampness can cause some fibre breakdown over time. Professional cleaning is recommended on occasion to ensure the long life of your rug.

Please refer to our website for more information: armadillo-co.com

Manufacturing Variations

Size - Can vary by +/- 3%.

Colour - Rugs are primarily made from natural and undyed fibres. Every effort is made to ensure there is minimal colour variation however some variation can be expected.

Pop-ups - Due to the nature of weaving, there will be short fibres popping up while the rug settles. These can be trimmed or pushed through.

Outdoor Use - If rug is exposed to chlorinated or salt water use plenty of fresh water to rinse. Vacuum your rug regularly to prevent build up of dirt and pollen, if left on the rug this can encourage mould growth. Please note that with continued sun exposure over time, your rug may fade.